



# TUNDRA RESCUE



**ACCESS**

**RESCUE**

**TRAINING**

**CONFINED  
SPACE**

**ROPE  
ACCESS**

**SAFETY**

**COMMERCIAL & INDUSTRIAL SERVICES**

2019/2020

# SERVICES - INDEX



PAGE 3 - CONFINED SPACE SAFETY

AIR MONITORING

VENTILATION

STANDBY RESCUE

DOCUMENTATION

---



PAGE 9 - ROPE ACCESS

ANY TASK AT HEIGHT

ADHERANCE TO  
RIGOROUS INTERNATIONAL  
STANDARDS

SAFE, EFFICIENT, VERSATILE

---



PAGE 14 - TUNDRA INTERNATIONAL

RISK MANAGEMENT

CONSULATING

TRAINING

CUSTOMIZED SERVICE



# EXCELLENCE IN SERVICE

We aim to be the best at what we do, and our customer feedback regularly affirms our position as the best service provider in our field.

We service a broad spectrum of industry and commerce such as:

- The Automotive Industry
- Oil and Gas
- Infrastructure & Wind Energy
- Construction
- Manufacturing
- Communications
- Defense
- Many others...



## Discipline, Efficiency & Drive

Founded in 2011 by Canadian Forces veterans, and continuing to employ active duty and retired **military service members**, our vision is to the highest quality safety, rescue and access services.



## Professionalism & Integrity

Tundra's work and rescue policies and procedures were developed in partnership with subject matter experts in the **Emergency Services**, and our staff includes active fire service personnel.



## Industry Knowledge

With experience across many different industries and staff with **combined trades experience**, we are able to customize our service to your project goals.



## Specialists in Risk Mitigation

We have an impeccable safety record. **Risk assessment and mitigation** is fundamental to the planning and delivery of our services.





TRAINING  
CONSULTATION



## CONFINED SPACE

ENTRY SUPPORT  
& HAZARD CONTROL

PROJECT SUPPORT



## INTEGRATED SOLUTIONS

Comprehensive confined space services, providing **compliance** and **technical** solutions to challenging access areas, along with full **rescue support** and **first-aid response**.

CONTACT  
RESCUE



AIR MONITORING  
& ATTENDANT



# PROVINCIAL REGULATION

Employers are required under **Ontario law** to have trained rescue standby staff available for immediate activation of a pre-determined rescue plan.

Similar regulations apply to Canada's other provinces and territories, and many firms and organizations in Canada have adopted this standard as a best practice.

Contacting local Emergency Services, **does not** constitute due diligence in confined space rescue planning.

**Fatalities continue to occur** due to deficient training & inadequate rescue capacity.



## TRUST IN **TUNDRA** CONFINED SPACE SOLUTIONS

- ✚ Professionally trained **Rescue Teams**
- ✚ Hazard assessment & **Customized Rescue Plans**
- ✚ **Access Solutions** (including efficient, safe alternatives to scaffolding)
- ✚ Air Monitoring & attendance duties
- ✚ **Ventilation** & atmosphere management
- ✚ Quality Private & Open **Training Programs**  
(Awareness, Entry, Rescue, NFPA)
- ✚ **Documentation and Reports**



# CONFINED SPACE CASE STUDY

## THE CUSTOMER'S CHALLENGE

**The customer**, a world leader in infrastructure technology, was assigned to install critical instrumentation into a series of subterranean pipelines. This scope of work required repeated visits in and out of the **complex pipeline system** by laborers and engineers, and the delivery of materials and tools from an **access point which was both 1km away, and proximal to a busy roadway**.

In order to ensure the safety of their personnel during what would be a difficult and prolonged procedure, the customer required a solution to the challenge of managing the risks of this complex **confined space entry**, without compromising the time and quality objectives of their project.

The identified risks of the project included the dimensions, distance and variable course of the pipeline, the need for multiple client staff members to enter to the confined space concurrently, and the roadside Carbon Monoxide threat. As part of a critical piece of infrastructure it was also important for the work to be completed as soon as possible to reduce loss of services to the end users of the pipeline.

### Main Challenges

- ✚ **Difficult access to space**
- ✚ **Multiple concurrent entrants**
- ✚ **Active roadway with CO gas threat**
- ✚ **Complex Technical Rescue procedures**
- ✚ **Work location far from access point**



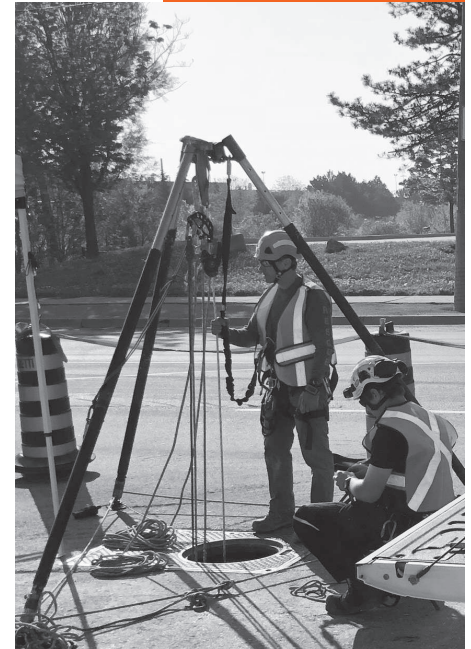


## THE TUNDRA RESCUE SOLUTION



Using our expertise in both access techniques and confined space safety, we planned and delivered a comprehensive technical solution that allowed our customer to **meet their project goals** by facilitating access into the space establishing a robust rescue system with highly-trained rescue technicians, and other features that included the following:

- + Monitoring and control of the internal **atmosphere**
- + Comprehensive documentation and **record keeping**
- + A customized rapid deployment **rescue plan**
- + Efficient and comfortable **access into the space**
- + Traffic control and **command / first aid station**
- + **Communication** system
- + Contact rescuers with Self Contained Breathing Apparatus
- + Pre-rigged rescue and recovery system for **rapid egress**









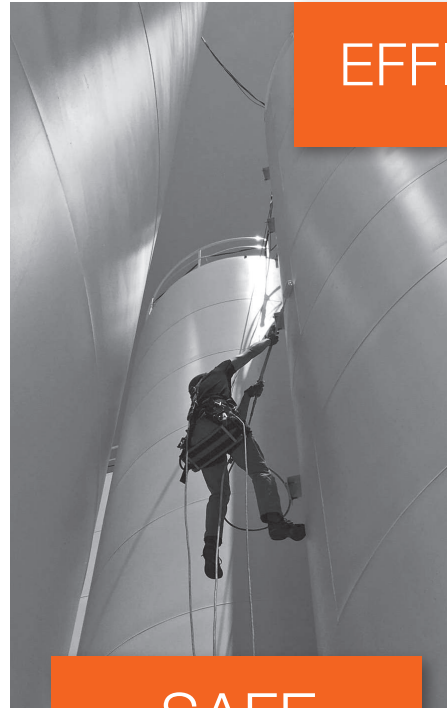
TRAINING &  
CONSULTATION

## ROPE ACCESS

WORK POSITIONING  
SOLUTIONS



NEARLY ANY TASK,  
NEARLY ANYWHERE



SAFE

### FAST, SAFE, EFFICIENT

Rope Access is a dynamic **alternative to conventional** access methods for all work in **difficult to access areas**. Quick setup and teardown speeds, with minimal equipment provides **significant time and cost savings**.

EFFICIENT





# WHAT CAN ROPE ACCESS DO?



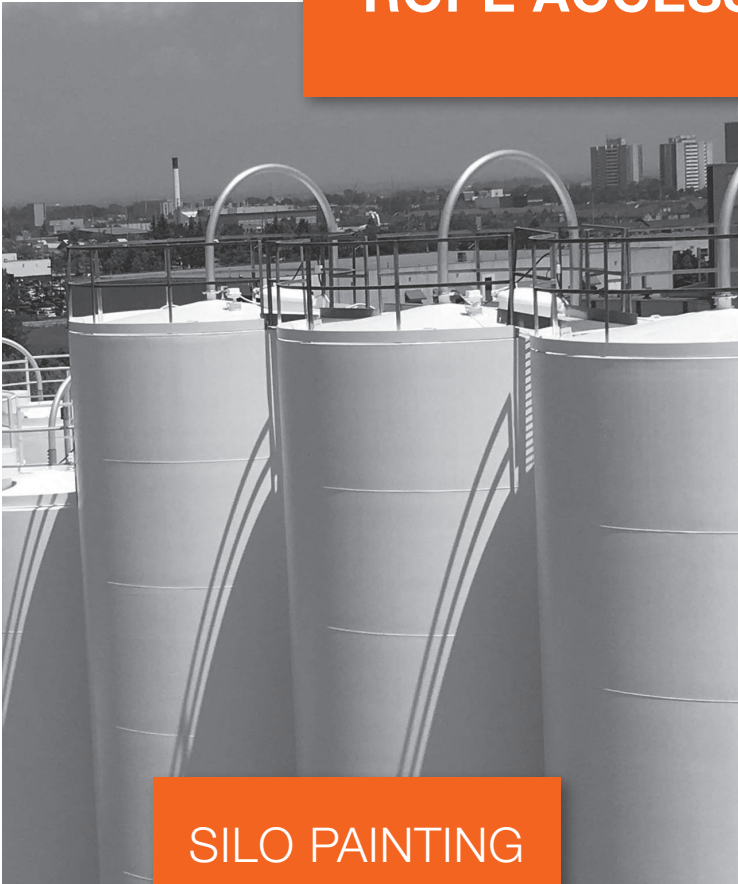
## UNPRECEDENTED VERSATILITY

Rope Access allows **almost any work** to be carried out in difficult to access locations, where conventional methods such as scaffolding, crane or basket are not practical or more expensive.

Adhering to strict international standards through the Industrial Rope Access Trade Association (**IRATA**) and The Society of Professional Rope Access Technicians (**SPRAT**); Rope Access is highly regulated.

Every Tundra Rescue Rope Access team is directly supervised by a Level 3 Technician, with a **minimum** of 1,000 hours experience of Rope Access labour, and in good standing with their respective trade organization.

# ROPE ACCESS CASE STUDIES

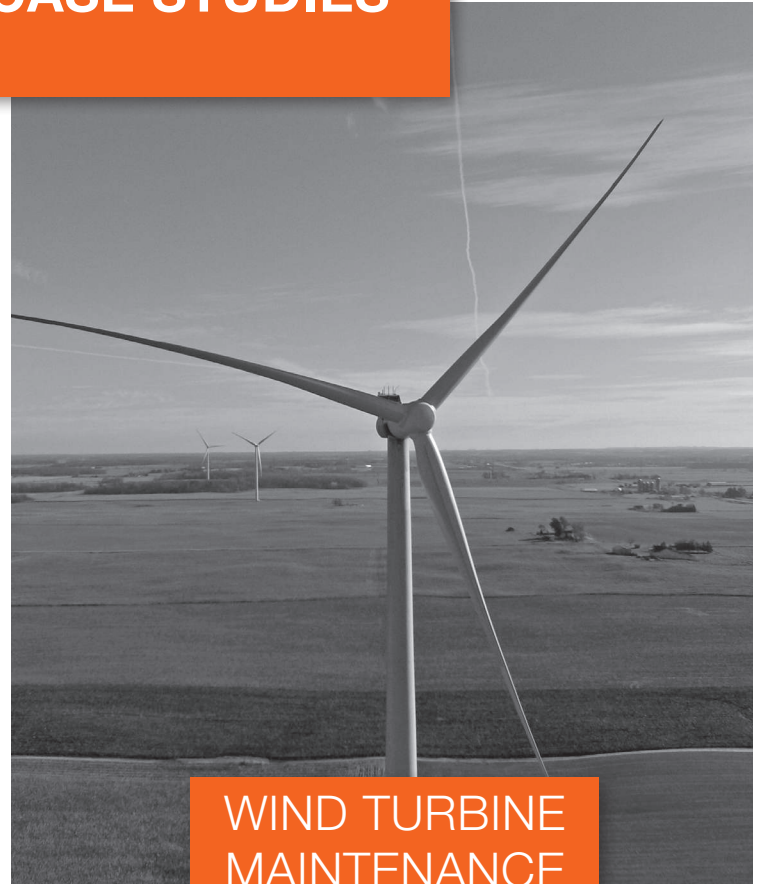


## SILO PAINTING

### CASE STUDY 1

The customer, a coatings firm, was unable to reach the exterior of silos that required painting, with insufficient ground space for a boom lift, and with the use of scaffolding cost being prohibitive.

## THE CHALLENGE

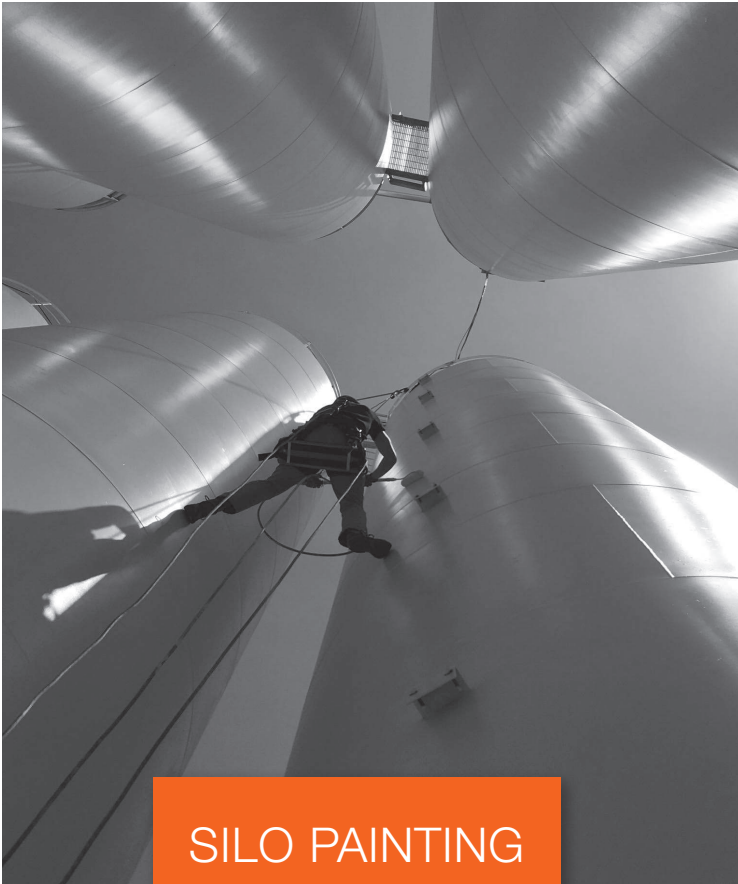


## WIND TURBINE MAINTENANCE

### CASE STUDY 2

The customer, a wind energy operator, had an urgent requirement to clean the exterior surface of a wind turbine. The cleaning area was outside of reach for conventional methods.





## SILO PAINTING

### CASE STUDY 1

Tundra's technicians established a robust anchor at the top of each silo, with a 2-rope redundant Rope Access system. They were then able to rappel rapidly and safely down the silo exteriors to clean, prime and paint the silos.

## THE SOLUTION



## WIND TURBINE MAINTENANCE

### CASE STUDY 2

Establishing redundant anchors within the turbine nacelle, and implementing a “rig-to-rescue” failsafe rescue system, our technicians rappelled to the work area to contain and clean it. Similar methods are used for other types of turbine maintenance.



# TUNDRA INTERNATIONAL

## MANAGING RISK & CREATING OPPORTUNITY

Tundra Rescue is the industrial and safety services division of Tundra International Inc. a risk management and security company.

Founded in 2006 and with past performance through acquisitions from 1990, Tundra has provided security, enterprise risk services, operational support and training assistance both in Canada and internationally to organizations that include the governments of Canada, the United States, France, Finland and Japan, Canada's major media networks, and organizations operating in sectors as diverse as heavy engineering, oil and gas, organic cosmetics, and development.



## OUR SERVICES

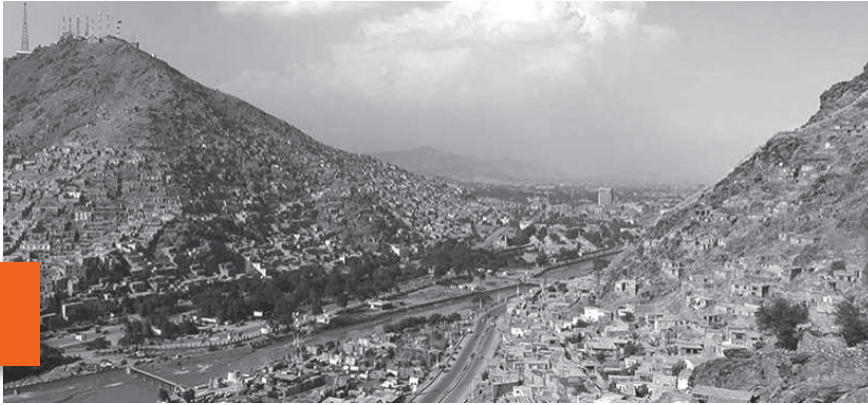
- + Security and safety advisory services, in Canada and abroad
- + Assistance with managing enterprise risks in overseas projects and programs
- + Audits, Investigations and Due Diligence
- + Travel Safety Training (including Hostile Environment Awareness / HEAT) \*
- + Defense and Protective Security Training
- + Operational Support and Business Continuity
- + Emergency and Crisis Management Planning & Assistance

\* Tundra is widely considered to be the leading provider in Canada of practical pre-travel safety training.



[www.tundragroup.ca](http://www.tundragroup.ca)





## INTEGRATED SOLUTIONS

---

We aim to provide sustainable, integrated strategies to manage our customer's risk issues, at all times focusing on their organizational goals. We have a strong focus on customer satisfaction, and we have developed a reputation for providing successful, creative solutions where traditional security solutions may not be appropriate, effectively using technology and human factors.

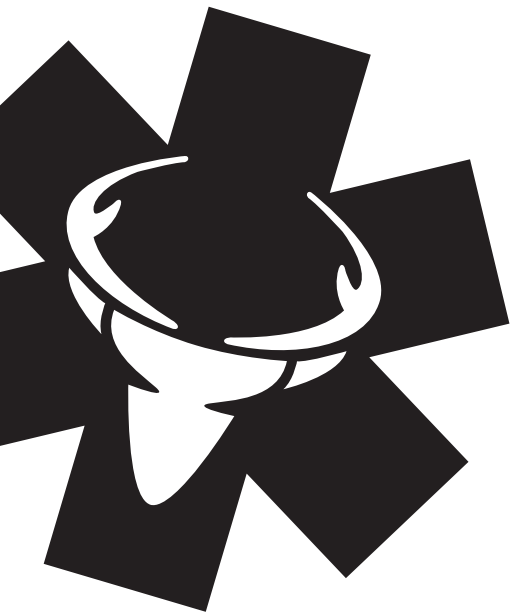
SECURITY ENTERPRISE RISK TRAVEL SAFETY TRAINING

## INTEGRATED SOLUTIONS

---

We are committed to providing services at the highest standard of compliance, quality and ethics, while showing an appreciation for the health, safety and welfare of our all of our stakeholders.





## CONTACT US

---

[info@tundrarescue.com](mailto:info@tundrarescue.com)  
[www.tundrarescue.com](http://www.tundrarescue.com)  
1 (705) 428 0544

© 2019 Tundra International Inc. All rights reserved